



# Expand your horizons

## OGx: The next generation of satellite IoT

ORBCOMM's next-generation satellite IoT service empowers you to build innovative, winning solutions. With OGx, you'll harness new capacity to develop more flexible, customizable and competitive offerings, enabling you to drive new revenue streams and growth.

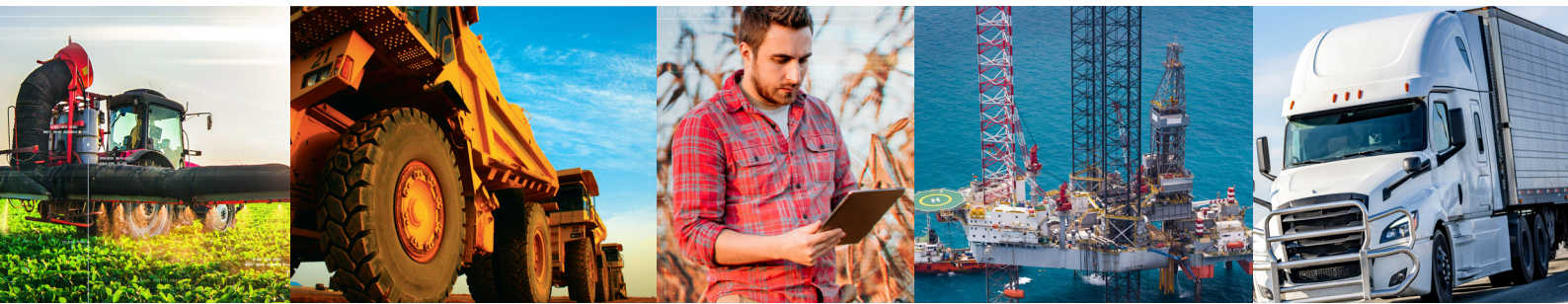
With faster delivery speeds, larger message sizes, lower power consumption, flexible data plans and all-new terminals, OGx empowers you to unlock the full potential of satellite IoT and deliver solutions that exceed your customers' expectations.



# Evolved for future challenges

Satellite IoT technology is evolving rapidly, becoming faster, more powerful and more affordable. And the market for IoT solutions is booming, with double-digit compound annual growth rates predicted as more and more users embrace digitalization. In the coming years, IoT solutions will increasingly be deployed to address some of the biggest challenges on the planet. Whether it's optimizing agricultural production, reducing carbon emissions, ensuring responsible fishing practices or reducing the environmental impact of resource extraction, the growth opportunities for system integrators and IoT solution providers will be endless.

OGx will help you address those and many more challenges facing your customers, enabling you to capture that market growth. With OGx, you have the global connectivity, the devices and the support you need to bring new solutions to market quickly and with more flexibility than ever.



## Unleash the power of OGx

### **Faster messages mean faster decisions**

With message receipt speeds up to 40x faster than our previous generation IDP network, OGx enables faster mission-critical decision-making. Sending a message in 20 minutes rather than 12 hours vastly improves response time in identifying issues and preventing costly escalations.

### **More powerful service and larger message sizes**

The maximum message size with OGx is 1 MB, 100x larger than our previous generation service. Larger message sizes, faster speeds, low latency and more affordable devices open new growth opportunities, offering you the ability to develop solutions for use cases that were impossible on our service before. You can send images, push over-the-air updates and much, much more.

### **More competitive, flexible data pricing**

OGx expands your competitive horizons on both ends of the spectrum, whether your solution requires lower or higher data usage. Our competitively priced flexible data plans reduce overage charges and allow you to use as much data as you need, when you need to, without getting locked into costly high-data plans. Unique to the industry, this gives you the flexibility to create economical solutions for customers who only periodically have high-data needs, such as over-the-air updates or scheduled large data log transfers.

### **More affordable devices**

OGx enables our next-generation of lower-cost terminals, modems and modules. OGx devices consume less power, so they're cheaper to run. And OGx will allow you to develop solutions with smaller hardware and lower-cost components, like smaller batteries and solar panels.



# New use cases, any industry

OGx will open new use cases in virtually every industry. Your IoT solutions will help your customers increase industrial output and productivity, reduce input costs and downtime, improve worker safety, expand the lifespan of expensive equipment and mitigate environmental impacts.

Here are just a few examples, along with the expected annual compound growth rate for IoT solutions in each industry:

| Industry        | Projected CAGR over 10 years* | OGx-enabled solution sample   |
|-----------------|-------------------------------|---|
| Agriculture     | 10%                           | High-data delivery of localized weather information for crop-by-crop farming data   |
| Heavy equipment | 15%                           | High-speed data capabilities and large messages for remote asset firmware upgrades and log file retrieval                         |
| Maritime        | 17%                           | Crew welfare solutions leveraging email and image-based virtual inspections   |
| Mining          | 11%                           | Remote site imaging to monitor for flooding, landslides and other hazardous conditions  |
| Oil and gas     | 10%                           | Images of remote sites to verify status and security of personnel   |
| Transportation  | 22%                           | Low-cost satellite and dual-mode solutions for always-connected asset tracking across routes with varying access to cell networks |
| Utilities       | 12%                           | High-data remote monitoring of reclosers and transformers to strengthen grid resilience and reduce service interruptions          |

*\* Precedence Research, Marine Digital, Acumen Research and Consulting, Allied Market Research, Future Market Insights.*

## Innovative affordability: new OGx-native devices

The new OGx devices are power-efficient, quick and easy to install and rugged. They're solar powered to reduce operating costs and eliminate the need for a wired power source or battery changes in the field.

### SC 1000

A low-cost device ideal for transportation asset and service-hour tracking to improve operational efficiency. It detects motion and shock for use cases with sensitive cargo or materials. Bluetooth door and temperature sensor support adds flexibility to solution development.

### ST 8100

A satellite-cellular dual-mode terminal with Bluetooth functionality. Dual mode enables your solutions to use the best connectivity for the task. It's ideal for monitoring vehicles, boats or fixed assets. And it's fully programmable so you can customize your solutions.

### Superior service, existing devices

You can also use OGx with our other ST family devices with a free upgrade. You get all the benefits of OGx, including lower power consumption, without the cost of new hardware. OGx is compatible with the ST 2100, ST 6000, ST 6100 and ST 9100, so you have the flexibility to select the right device for the job.



# Five reasons to choose ORBCOMM

## 1 **End-to-end support**

ORBCOMM's industry-leading support for our value-added resellers and system integrators extends to OGx. You have access to our 24/7/365 multi-lingual tech support team, our partner portal with documentation, tools, apps and development kits and our highly skilled and experienced team of field application engineers to help get you started and assist you on the way.

## 2 **Proven**

We're pioneers in satellite IoT with more than 30 years' experience. We've helped our network of more than 400 VARs and system integrator partners succeed with IoT solutions in a variety of industries around the world.

## 3 **Innovative**

Our OGx satellite modems and programmable terminals are designed with IoT solution

providers in mind. Program your own custom applications or choose from our suite of pre-built terminal apps to accelerate your development of the right solutions for your market.

## 4 **Global**

OGx delivers 99.9% availability, virtually global coverage and an extensive regulatory footprint, so you can develop solutions for customers in even the most remote places on the planet. OGx is supported by Inmarsat's global L-band constellation.

## 5 **A complete partner**

From connectivity to devices, tech support to field services, tools to testing kits—ORBCOMM gives you everything you need to build the competitive IoT solutions of tomorrow and get them to market faster.

For more information or to book a demo:

Email: [sales@ORBCOMM.com](mailto:sales@ORBCOMM.com) | Call: **1-800-ORBCOMM**

(toll-free North America) +1-804-404-8681 (international toll)

Visit our website [www.ORBCOMM.com](http://www.ORBCOMM.com)



ORBCOMM is a global leader in industrial IoT, delivering visibility, intelligence and efficiency to the world's most critical operations. With 30 years of innovation and more than 2.4 million connected devices, we transform data into actionable insights, driving greater efficiency, safety, resilience and sustainability. Serving customers that include the world's largest shipping lines, over-the-road trucking fleets, cold-chain transportation fleets and a global network of IoT solution provider partners, ORBCOMM is where IoT powers asset intelligence.