



## The Smart Trailer

### Intelligent asset monitoring and analytics for dry van fleets

For transportation and logistics companies, every minute on the road counts. Knowing where trailers are, how long they've been out of rotation and when they'll reach their destination is essential to streamlining operations and improving profitability.

ORBCOMM's trailer tracking solution enables 24/7 visibility into the location and status of every trailer in the fleet. Whether you operate 10 or 100,000 trailers, our solution allows carriers to manage by exception, drawing attention to issues that require immediate action for a more efficient operation driven by data.



# Complete visibility and efficiency

Improve trailer utilization, optimize trailer pools, monitor for detention, protect high-value cargo and more with smart trailer data from a single cloud-based platform that seamlessly integrates with third-party systems.



## The smart trailer: key benefits

### Improve trailer utilization for better profitability

Identify assets that have been dwelling for an extended time to get them back into rotation. Monitor trailer utilization at customer sites and optimize trailer pools by redeploying under-utilized assets to locations with higher demand. Achieve better trailer-to-tractor ratios and improve turn times with arrival and departure notifications. Eliminate yard checks and automate inventory tracking to streamline trailer assignment. Assign additional loads to drivers based on unused trailer capacity.

### Monitor for detention

Receive alerts when trailers are detained at customer locations beyond what the contract allows. Use telematics data to set expectations with customers, minimize occurrences and bill accordingly when infractions occur.

### Improve customer service

Get periodic updates when trailers are on the move and be automatically notified when they enter or leave specific locations to improve dispatch operations and provide accurate ETAs to customers. Give customers read-only access to specific fleet data to help them streamline load and unload cycles and cargo distribution.

### Detect asset theft and facilitate recovery

Know where trailers are all the time. Get prompt alerts when unauthorized access is detected or when they deviate from normal routes. When theft occurs, smart telematic devices notify of tampering and report current and past location in order to facilitate recovery.

### Protect cargo

Cargo theft is a serious problem for carriers everywhere. In addition to high insurance premiums and revenue losses, cargo theft can cause shippers to lose confidence in a carrier and pull their business as a result. Theft can also hinder a fleet's reputation and its ability to win new businesses. Use telematics data to monitor cargo around the clock, notifying operators of tampering, unauthorized access or unscheduled loading and unloading to help fleets enable quick corrective action when issues are detected.

### A better dispatch

Never send a driver to the wrong location or waste driving time. Accurate GPS location data ensures your trailer inventory records are always up to date so you can run a smooth dispatch operation. Seamlessly integrate trailer data into dispatch software from leading TMS vendors, ERP systems and other enterprise platforms to get up-to-the-minute trailer location from any application.

# Key features

## Trailer location

See the position of every trailer with the option to display geofences and traffic. Hover over a trailer to see last reported information such as time, GPS position, speed, cargo status and battery voltage. Generate a breadcrumb trail of its trajectory and see status at different stages along the journey.

## Geofences

Create virtual fences around landmarks such as warehouses, yards, depots and loading docks to receive automated alerts when trailers enter or leave those locations. Streamline load/unload cycles and efficiently coordinate crews at loading docks inside a geofence with our nested geofence feature. Bill customers when it takes too long to unload your trailers and quickly identify assets inside a geofence as well as those that are nearby.

## Custom reports and analytics

Build customer reports, filter assets, save for quick access or schedule to be periodically delivered to individuals or groups. Advanced reports allow you to track engine health, hours of operation, fuel consumption and inventory management.

## Utilization reports

Quickly identify any trailers that have been idle for a specific time to get them back into rotation. Filter information to streamline the results: last reported event, address, geofence, door and load status, dwell start and end time and more.

“

**End-to-end visibility to the entire supply chain is the new expectation.** As a technology leader in the industry, we are excited to provide this service to our customers.

### Terry Matthews

Executive VP and President of  
J.B. Hunt's intermodal division

”

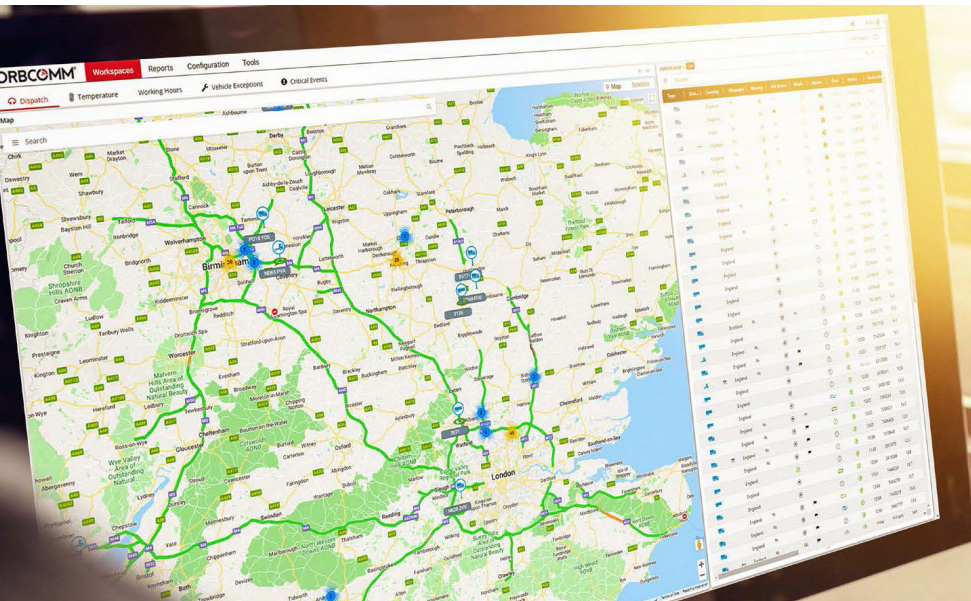


## Smart sensing technology

Door sensors enable door status notifications to help protect high value cargo and identify unauthorized access. Integrated BLE cargo sensing delivers cargo loaded/unloaded notifications while a high-definition cargo camera shows the percentage of available space inside the trailer to help fleets optimize capacity. Seamlessly integrate other external BLE sensors, such as tractor ID, TPMS and temperature and humidity.

## Backup Satellite Connectivity

Maintain connectivity with drivers, trailers and cargo in remote locations where the cellular network is unavailable or when compromised by severe weather or natural disasters with optional satellite failover.



# Five reasons to choose ORBCOMM

**1 Proven**  
Choose a solution that's proven itself through 30 years of operation and 2.1 million global subscribers, and has been widely deployed by some of the biggest names in the industry, including companies like Prime, C.R. England, Walmart, C&S Wholesale, Hirschbach Motor Lines, Maersk, Target, Tyson Foods, Werner Enterprises and more.

**2 Seamless integration**  
Enhanced integration with TMS systems like McLeod and TMW allows customers to get actionable trailer data from their existing dispatch application, eliminating the need to learn a new software.

**3 End-to-end**  
Our solutions feature proprietary, best-in-class technology and include intelligent IoT telematics devices, seamless satellite and

cellular connectivity and a powerful management platform, all backed by end-to-end customer support through all aspects of deployment and beyond.

**4 Always connected**  
We own and operate the world's first and only commercial satellite network dedicated to IoT communications. With our optional backup satellite service, our smart solutions deliver uninterrupted connectivity with every trailer in the fleet even when the cellular network is out of reach or compromised by bad weather or natural disasters.

**5 All-in-one**  
Get a single view of all your assets—trucks, dry trailers, reefers, containers and chassis—on one screen with the ORBCOMM platform. A unified view makes it easier for dispatch, safety, compliance, operations, IT and executives to manage all aspects of the fleet from one easy-to-use application.

For more information on our solutions or to book a demo:

Email: [sales@ORBCOMM.com](mailto:sales@ORBCOMM.com) | Call: 1-800-ORBCOMM

Visit our website [www.ORBCOMM.com](http://www.ORBCOMM.com)



ORBCOMM is a global leader in industrial IoT, delivering visibility, intelligence and efficiency to the world's most critical operations. With 30 years of innovation and more than 2.4 million connected devices, we transform data into actionable insights, driving greater efficiency, safety, resilience and sustainability. Serving customers that include the world's largest shipping lines, over-the-road trucking fleets, cold-chain transportation fleets and a global network of IoT solution provider partners, ORBCOMM is where IoT powers asset intelligence.