

CONNECTING THE WORLD'S ASSETS

**ORBCOMM®**

# VAR TOOLS AND RESOURCES

## TOOLS TO ACCELERATE SOLUTION DEVELOPMENT

ORBCOMM simplifies solution development to accelerate time to market for value added resellers and system integrators. Our portfolio of powerful, rugged and cost-effective terminals and modems allow you to track, monitor and control assets in some of the world's most remote locations with complete global coverage across multiple satellite and cellular networks. We provide the tools you need to easily integrate our terminals into your solutions to solve multiple business challenges to exceed your customers' expectations.

MULTI-NETWORK CONNECTIVITY • HARDWARE SOLUTIONS • IoT APPLICATIONS



# Simplified Solution Development

ORBCOMM's programmable terminals allow you to process information at the edge of the network, minimizing communication costs and delivering enhanced value to your customers. We provide a family of tools and resources that enable you to quickly develop, test, and trial your solutions to accelerate your time to market and speed your path to revenue.

## Development Kit

ORBCOMM® development kits contains all the hardware you need to quickly and easily integrate our terminals into your solutions. Each kit contains a development terminal, Bluetooth capability, cables and adaptors, free activations and airtime, technical documentation, a quick start guide, access to free technical support and more.

The key to the development kit is the development terminal. It allows you to develop and test a custom Lua application at your desk without the need for a satellite connection. The development terminal includes an I/O board that enables testing with various inputs and outputs and connects to a PC running our satellite modem simulator (from the software toolkit).

Bluetooth capability is available to provide connectivity between the development terminal and a mobile app that enables you to locally evaluate satellite network connectivity, see the location, speed and heading of the terminal on a map, and send over-the-air messages to and from the terminal.

## Software Toolkit

The development kit is the foundation of your development environment but it's the software toolkit that brings it to life. The software toolkit includes all the tools you need to write your terminal application and integrate it with your backend software.

The software toolkit includes a development environment, a modem simulator, a console command line interface, a messenger application, code samples, documentation and much more.

Software toolkit highlights include:

**Modem Simulator** is an application that simulates all aspects of the network: our satellites, the gateway, GPS data such as the latitude, longitude, speed and heading of a terminal and more. It connects to the development terminal, allowing you to develop and test your application without an actual satellite connection.

**Developer Studio** is an integrated development environment for creating or modifying Lua applications on our terminals. This is where you add the smarts to the terminal to integrate to the rest of your solution. You can jump-start development by using some of our code samples, or even use the set-up assistant to add basic functionality to your terminal application directly in the source code.

**The Console** provides a command line interface to configure and troubleshoot terminals and includes features to load firmware and package files, as well as to retrieve log files.

And finally, **Messenger** connects to your gateway account and allows you to receive and send messages.

These software tools allow you to immediately get started developing and integrating applications on our terminals. You can download the software toolkit and access detailed documentation at our support portal.

## Terminal Apps

Our terminal apps are software applications that run on our terminals and include sophisticated features that



address specific target markets. Each of these apps are highly configurable, and multiple apps can run on a terminal concurrently or collaboratively. By configuring and/or combining our apps, a solution can be created to address a market niche without having to fully code the application from scratch.

Terminal apps are designed to simplify solution development and reduce programming time and costs. Partners benefit from our extensive experience in each market, coded into each app. Terminal apps can be used exactly as they are or configured to meet specific requirements. In either case, they're just another way we accelerate your solution development time and speed your time to market.

There are many terminal apps, so look at our terminal app data sheets or check out our support portal to find documentation that describe them in detail.

Here's a description of a few of them:

**The AVL app** enables simple configuration of a variety of event-based reports and thresholds based on an application's needs for location tracking, vehicle status, accident reconstruction, sensor status and driver behavior monitoring.

**The J1939 app** extracts information from a vehicle's J1939 CAN bus that can be used to identify usage patterns as part of monitoring engine health, vehicle performance, and driver behavior.

**The Garmin Fleet Management Interface (FMI) app** speeds development of navigation, dispatch, and in-vehicle communication features using Garmin Devices.

**The ARC app** collects data from field equipment like storage tanks, valves and flow meters to monitor, track and control remote industrial assets.

**The Mail app** allows you send and receive emails over satellite.

### Free Support When and How You Need it

For the basics, our support portal gives you access to administrative information, training, documentation, software and utilities for testing and troubleshooting your application.

Self-service is great, but sometimes you just need to speak to someone to straighten out an order, answer a technical question, help debug an app or just bounce ideas around. Our support team is there for you. We have offices in ten countries globally, speak seven languages, and are open 24/7 to take your calls.

They can get you all the information you need to be successful including:

- Orders and billing
- Provisioning and commissioning
- Troubleshooting
- LUA and app software support
- Backend development support
- Satellite gateway support

---

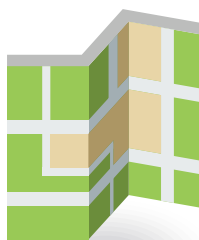
## Terminal Apps:



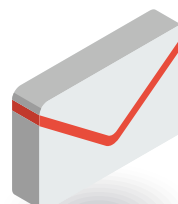
AVL



J1939



Garmin FMI



Mail



ARC

## Professional Services

If you need some extra help or resources to augment your team, our highly qualified field application engineers (FAE) are ready to help. They've developed apps on our terminals for many years and have solved technical challenges that many partners once thought were insurmountable. Our FAEs can provide services as varied as analyzing customer requirements, providing system or application consulting, supporting regulatory approval and developing custom software. Our experts work with you to understand your business and technical challenges and help you define and implement the best solution possible, making it easy for you to succeed in delivering industrial IoT solutions.

## Why ORBCOMM

ORBCOMM is a pioneer. We began 25 years ago, providing machine to machine communication on our own satellite

network. We've been connecting enterprise assets ever since, way before the Internet of Things was a thing. Today ORBCOMM is a leader in industrial Internet of Things solutions. Our 2.4 million subscribers are a testament to the number of partners who have trusted us to help grow their businesses.

Our engineers, technical resources and customer support team ensure we deliver the best technology, support, and resources to help you to exceed your customers' expectations.

ORBCOMM has the financial strength, the employees and the deep technical and market experience to assure your customers that no matter what the size or complexity of the project, together, we can get the solution delivered on time and exceed their expectations.

To order your development kit go to <http://www2.orbcomm.com/satellite-terminal-kit>.

The software toolkit, terminal apps and all documentation can be found at the **ORBCOMM support portal**.



ORBCOMM is a global leader and innovator in the industrial Internet of Things, providing solutions that connect businesses to their assets to deliver increased visibility and operational efficiency. The company offers a broad set of asset monitoring and control solutions, including seamless satellite and cellular connectivity, unique hardware and powerful applications, all backed by end-to-end customer support, from installation to deployment to customer care. ORBCOMM has a diverse customer base including premier OEMs, solutions customers and channel partners spanning transportation, supply chain, warehousing and inventory, heavy equipment, maritime, natural resources, and government. For more information, visit [www.orbcomm.com](http://www.orbcomm.com).