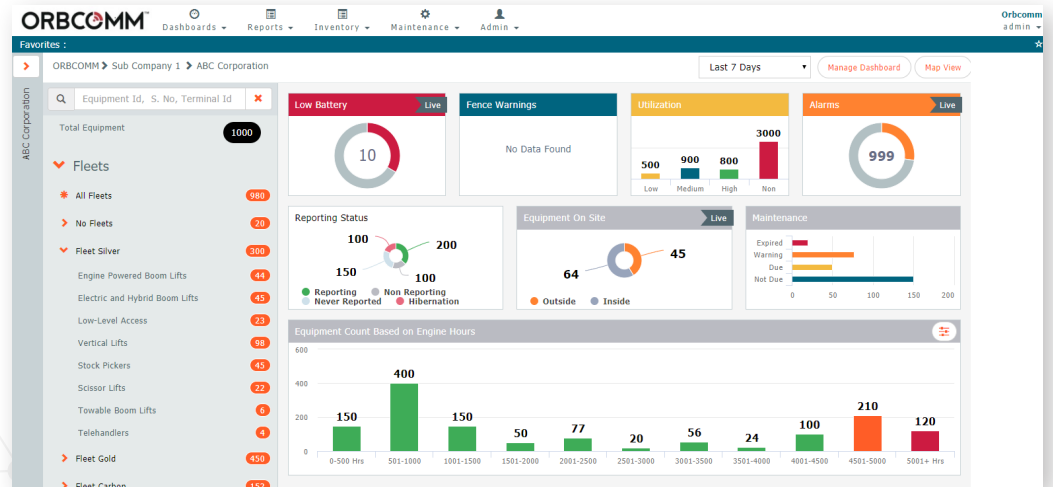


FleetEdge

Heavy Equipment Monitoring and Management



ORBCOMM's heavy equipment solution provides fleet owners with instant access to key operational data and engine diagnostics using ORBCOMM's leading-edge devices and the FleetEdge application. Data is transmitted from equipment around the globe back to the application via satellite or cellular networks for around-the-clock operational visibility.

Features

Custom Views and Favorites: Use filters and customize the application to display only information that is relevant to your organization. Assign favorites for enhanced monitoring efficiency.

Asset Location: Know where your assets are at any time.

Scheduled Reports: Schedule periodic equipment status, utilization and productivity reports to track engine hours and other operational metrics.

Custom Reports: Create custom reports from a wide range of sensor data collected from field assets.

Event-Based Alerts: Receive real-time alerts via text and email when specific conditions are detected or thresholds are exceeded—engine warnings, geofence and timefence violations, low battery alerts and more.

Maintenance Scheduling: Set thresholds to monitor equipment performance, manage maintenance schedules and receive notifications of upcoming service appointments to enable preventative maintenance.

Multi-Language Support: FleetEdge supports English, Spanish, French, German, Italian, Polish, Arabic and Hebrew.

Multi-Level Access: Restrict access to different people in the organization based on roles for complete flexibility and control.

Interactive Graphs and Charts: Create custom charts and graphs from a wide range of parameters and data collected by the solution. Overlap multiple parameters for advanced analytics.

Dynamic dashboard with custom widgets

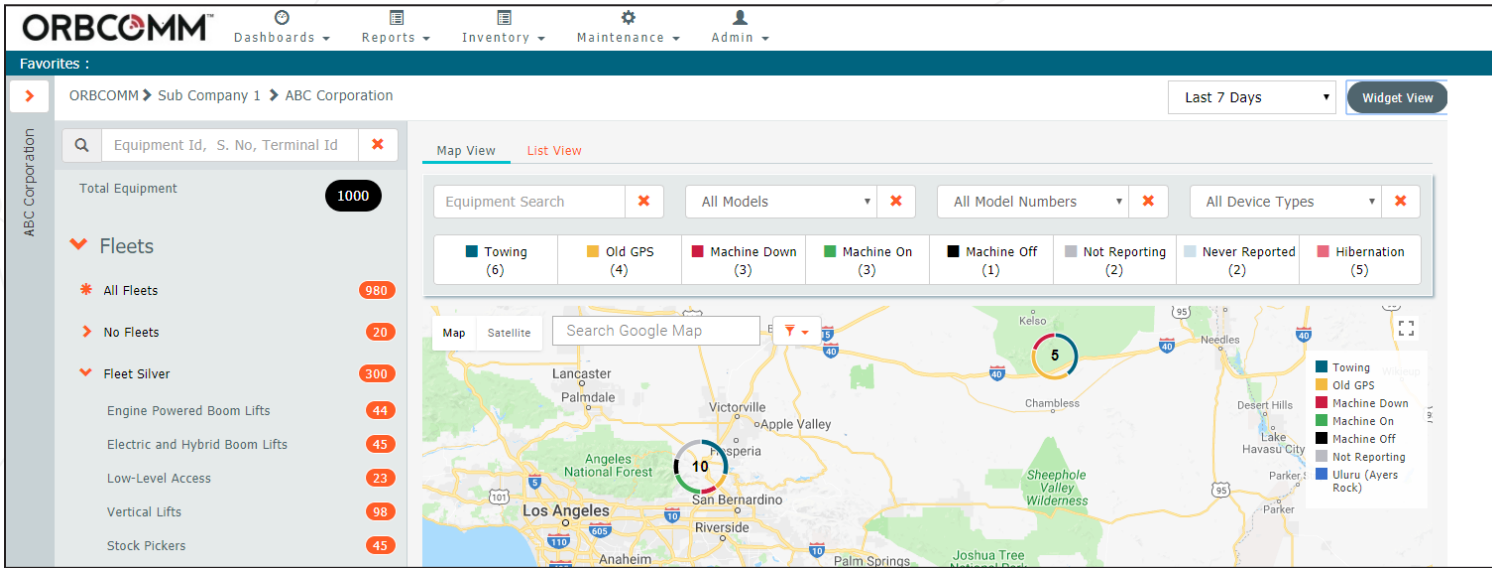
Access to key operational metrics

Customizable and easy-to-use web application

Advanced reporting and analytics

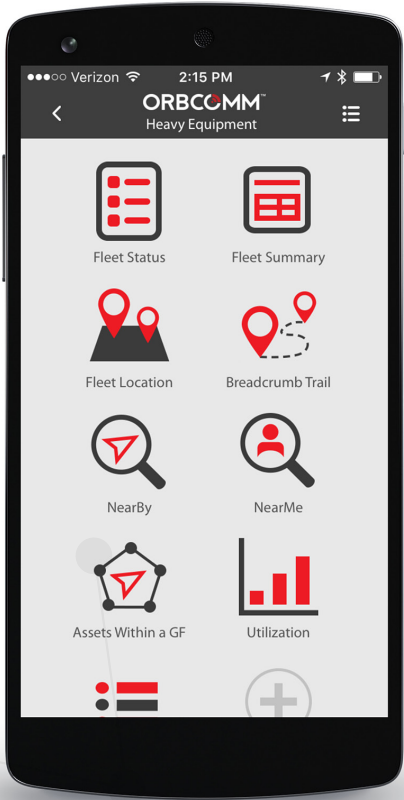
Interactive graphs and charts

Multi-level administration and user access



FleetEdge On the Go

The ORBCOMM mobile app makes it possible for you to manage your heavy equipment on the go. Track the location of assets in real-time, monitor equipment status and utilization, receive alerts and more—all from the palm of your hand.



CALL: 1.800.ORBCOMM EMAIL: SALES@ORBCOMM.COM VISIT: WWW.ORBCOMM.COM

ORBCOMM (Nasdaq: ORBC) is a global leader and innovator in the industrial Internet of Things, providing solutions that connect businesses to their assets to deliver increased visibility and operational efficiency. The company offers a broad set of asset monitoring and control solutions, including seamless satellite and cellular connectivity, unique hardware and powerful applications, all backed by end-to-end customer support, from installation to deployment to customer care. ORBCOMM has a diverse customer base including premier OEMs, solutions customers and channel partners spanning transportation, supply chain, warehousing and inventory, heavy equipment, maritime, natural resources, and government. For more information, visit www.orbcomm.com.