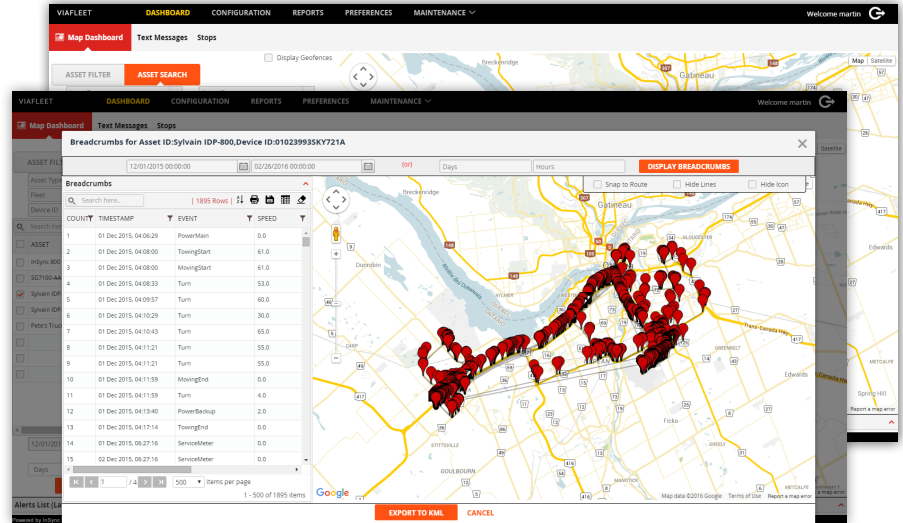


viaFleet

Comprehensive web-based fleet management

The viaFleet application delivers advanced vehicle tracking and driver monitoring through an intuitive, easy to use interface.



With a rich feature set and comprehensive functionality, viaFleet makes it possible for integrators and fleet owners to fully deploy an advanced fleet management solution, quicker. The application supports ORBCOMM's IDP 600, 700 and 800 series, as well as select third-party devices, including the Xirgo XT4560 to meet specific operational and equipment needs.

FEATURES

Advanced asset tracking: Track the exact location of assets on a map in real-time for complete visibility. Monitor trips from start to finish with breadcrumb reports, access historical information and more.

Access control: Tiered user accounts enable complete access control of different individuals and groups.

Real-time alerts: Get notifications via SMS or e-mail when specific events occur—speeding, location and geofence access, among others.

Geofences: Create circular or polygon geofences and assign them to groups or individual assets. Receive real-time alerts when vehicles enter or leave a geofence or when dwelling times at a specific location exceed configured thresholds.

Detailed reports: Run, schedule or export reports to monitor speeding, asset history, recorded events, entry, exit and dwelling times inside a geofence and more.

Remote control: Respond to a panic alert by immobilizing a vehicle remotely to minimize theft in hijacking situations.

Garmin integration: Communicate with drivers via text messages, assign new stops, check stop status and position.

Driver identification: Assign drivers to specific vehicles to control and monitor access and to enable driver behavior monitoring.

Asset health: Run detailed asset health reports, monitor vehicle performance and manage service schedules to enable preventative maintenance.

Web-based application

User-friendly and versatile

White label options

Advanced reporting and analytics

Customizable



Why choose viaFleet

Savings and Quick Time to Market

Save on costs associated with the development of a new fleet management application and bring your solution to market quicker.

Feature-rich

viaFleet supports advanced fleet management functionality such as driver behavior monitoring, driver identification, preventative maintenance and more.

One-stop shop

ORBCOMM's comprehensive portfolio includes everything you need to build a complete turnkey solution for—smart

tracking devices, sensors, satellite and cellular connectivity as well as web and mobile applications.

Low overhead

Let us absorb the cost of owning, hosting and supporting an application. Enjoy free access to ORBCOMM customer service and take advantage of new features with free software updates.

Customizable

The viaFleet solution can be configured to meet individual customer requirements. Add your logo and corporate branding for a unified look and feel.

CALL: 1.800.ORBCOMM EMAIL: SALES@ORBCOMM.COM VISIT: WWW.ORBCOMM.COM

ORBCOMM Inc. (Nasdaq: ORBC) is a leading global provider of Machine-to-Machine (M2M) communication solutions and the only commercial satellite network dedicated to M2M. ORBCOMM's unique combination of global satellite, cellular and dual-mode network connectivity, hardware, web reporting applications and software is the M2M industry's most complete service offering. Our solutions are designed to remotely track, monitor, and control fixed and mobile assets in core vertical markets including transportation & distribution, heavy equipment, industrial fixed assets, oil & gas, maritime and government.

R021216A