



# SCALABLE IoT INFRASTRUCTURE FOR BUSINESS APPLICATIONS

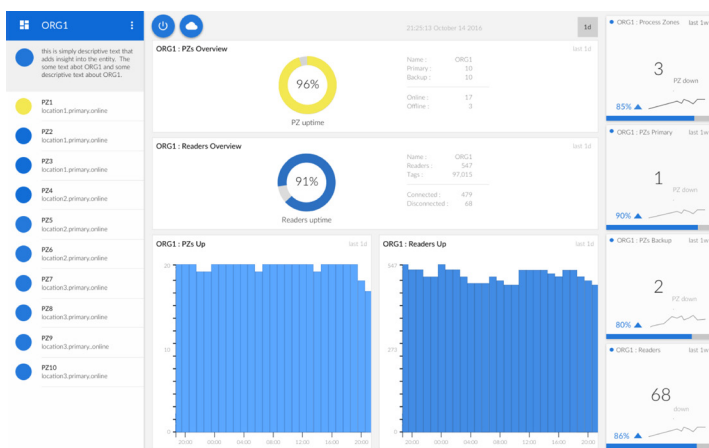
## **BUILD, SCALE AND MANAGE RFID DEPLOYMENTS**

RFID networks can deliver tremendous business intelligence to enterprises by identifying asset locations, flows and bottlenecks. But developing an RFID solution for the unique asset functions and processes of your company is a complex task. ORBCOMM simplifies things by creating and deploying targeted RFID infrastructure so you can focus on optimizing your solution for tracking your asset usage and improving your bottom line.

ORBCOMM provides the RFID tags, readers, network and on-premise or cloud-based software infrastructure that deliver critical information about your assets to your business application or backend software. Using ORBCOMM's infrastructure allows you to scale your deployments and configure, monitor and manage them uniformly, as well as providing your solution with more optimized data storage and real-time responsiveness.

### System Health Monitoring and Management

RFID networks are built to derive valuable business intelligence from the data so you can increase profitability. However, the integrity and accuracy of the data must be assessed for proper decisions to be made. A cloud-based portal into the health of your RFID network offers visual assurance that everything is in order – that your assets are being tracked, your readers are all online and operational, and more – as well as delivering alerts when anything goes awry so you can take corrective action immediately.



### Scale

RFID networks are sometimes delivered in stages – the first site is outfitted, and other ones follow. But from an operational aspect, these sites may all be very similar (different factories within the same company, for example) and may be better configured, managed and monitored from a single interface. ORBCOMM provides this capability, allowing performance metrics to be shared and compared across sites, catching outliers and delivering better cross-company optimizations.

ORBCOMM delivers high-performance enterprise IoT asset management to a wide range of customers. Get complete device-to-dashboard solutions, delivered and managed applications or our application enablement platform to develop your own solutions.

Learn more at [www.orbcomm.com](http://www.orbcomm.com).



© ORBCOMM 2017 All Rights Reserved. ORBCOMM Inc. (Nasdaq: ORBC) is a leading global provider of Machine-to-Machine (M2M) communication solutions and the only commercial satellite network dedicated to M2M. ORBCOMM's unique combination of global satellite, cellular and dual-mode network connectivity, hardware, web reporting applications and software is the M2M industry's most complete service offering. Our solutions are designed to remotely track, monitor, and control fixed and mobile assets in core vertical markets including transportation & distribution, heavy equipment, industrial fixed assets, oil & gas, maritime and government.

R050117B

### Process Flow Optimization

ORBCOMM RFID networks offer a top-level visual representation of assets and scans at different times and locations, which can highlight bottlenecks or opportunities for process improvements. Instead of dealing with specific assets, a network-level viewpoint offers a peek into the efficiency of the infrastructure. Make sure your readers are running optimally, or that your product is not accumulating at a bottleneck.

### Data Context and Resource Reduction

Before delivering information to your business application, ORBCOMM's RFID infrastructure enables intelligent real-time data processing using a patented multi-stage parallel event processing bus, delivering contextual information as opposed to just data – only relevant information is delivered to your application, significantly reducing complexity and computational and storage requirements.

### Real-Time Responsiveness

Existing RFID systems can provide a wealth of information. Extensive, time consuming data mining through location, time and asset information can yield information about long term operations or trends. Take advantage of ORBCOMM's real-time processing capabilities to perform real-time analytics and deliver real-time process improvements.

### Proven solutions

**Indoor/outdoor asset tracking:** Track and optimize assets, improve the accuracy of your inventory.

**Inventory and warehouse management:** Improve the visibility, accuracy and efficiency of inventory, high value equipment and work tools.

**Cold chain and pharmaceuticals:** Reduce spoilage and improve regulatory compliance throughout the supply chain of refrigerated goods.

**Energy and natural resources:** Manage equipment, tools, people and vehicles for complex applications involving oil and gas, pipeline, mining and offshore applications.